



Wolvey Road, Bedworth, CV12 9JR

**SHELDON
BOSLEY
KNIGHT**

LAND AND
PROPERTY
PROFESSIONALS

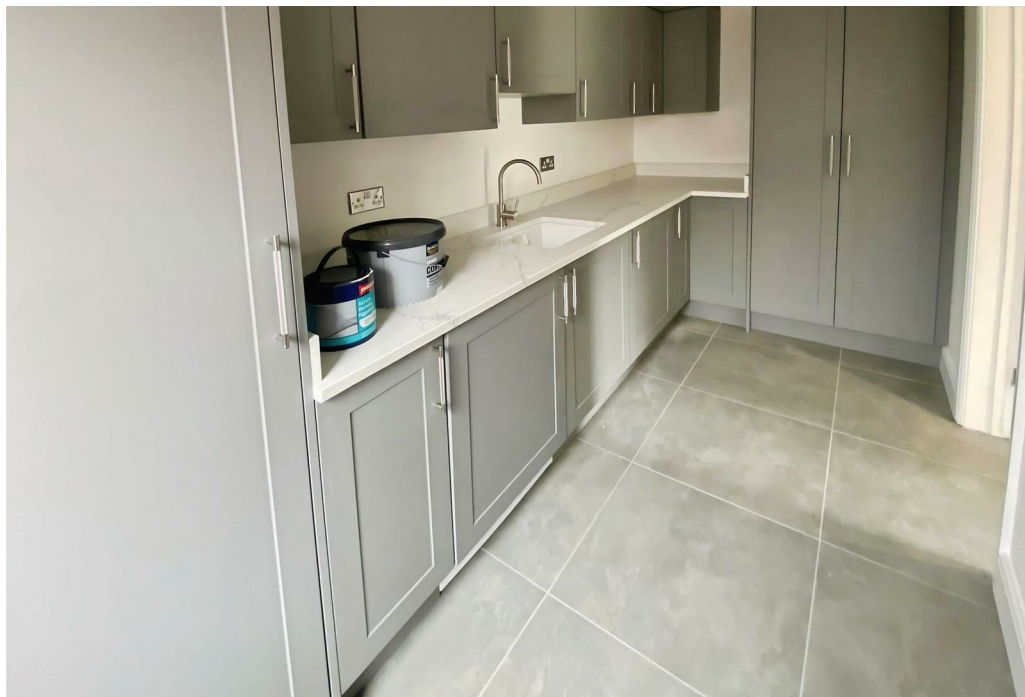
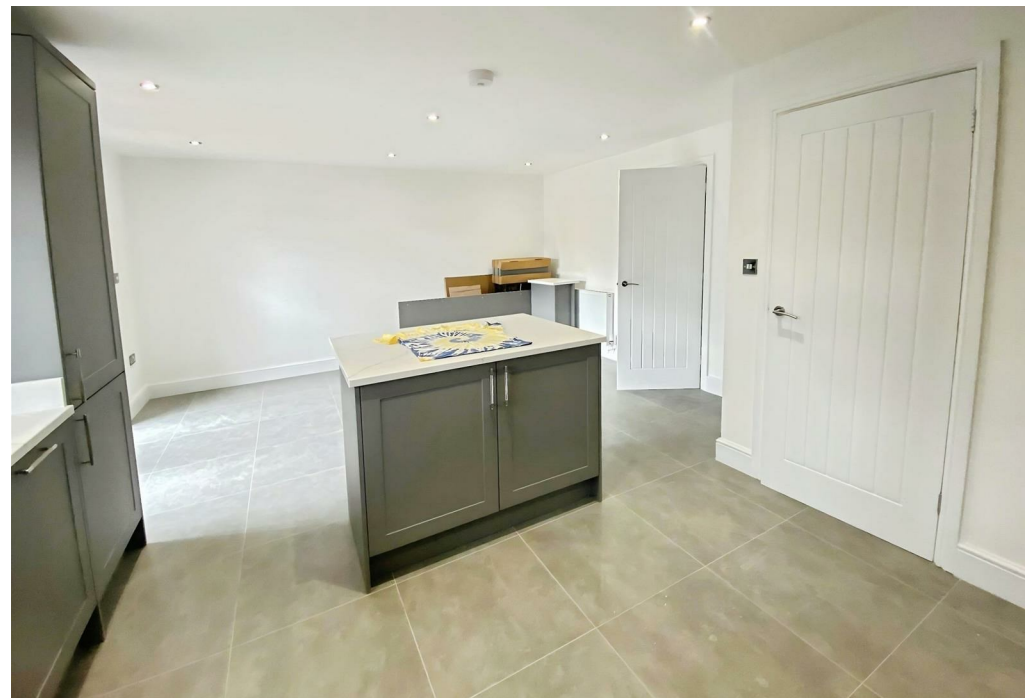
Property Description

**** AVAILABLE DECEMBER ** DEPOSIT ALTERNATIVE AVAILABLE **** Stunning newly built, detached house located in Bulkington, Bedworth. This impressive property boasts four spacious bedrooms, making it an ideal family home. The well-designed layout includes a WC, comfortable reception room, modern granite kitchen with island, and dining area having French doors leading to the rear garden. The kitchen provides access to the ample utility room. The upstairs bathroom has a bath with separate double shower.

One of the standout features of this home is the gated driveway, providing both security and peace of mind. With ample parking space for up to five vehicles. Additionally, the property is equipped with CCTV.

Situated in a lovely area, don't miss your chance to make this exceptional house your new home.







Key Features

- Detached House
- New Build
- Four Bedrooms
- Gated Driveway
- Modern Kitchen Diner
- Utility Room
- Enclosed Rear Garden
- Deposit Alternative Available.

£1,750 PCM